

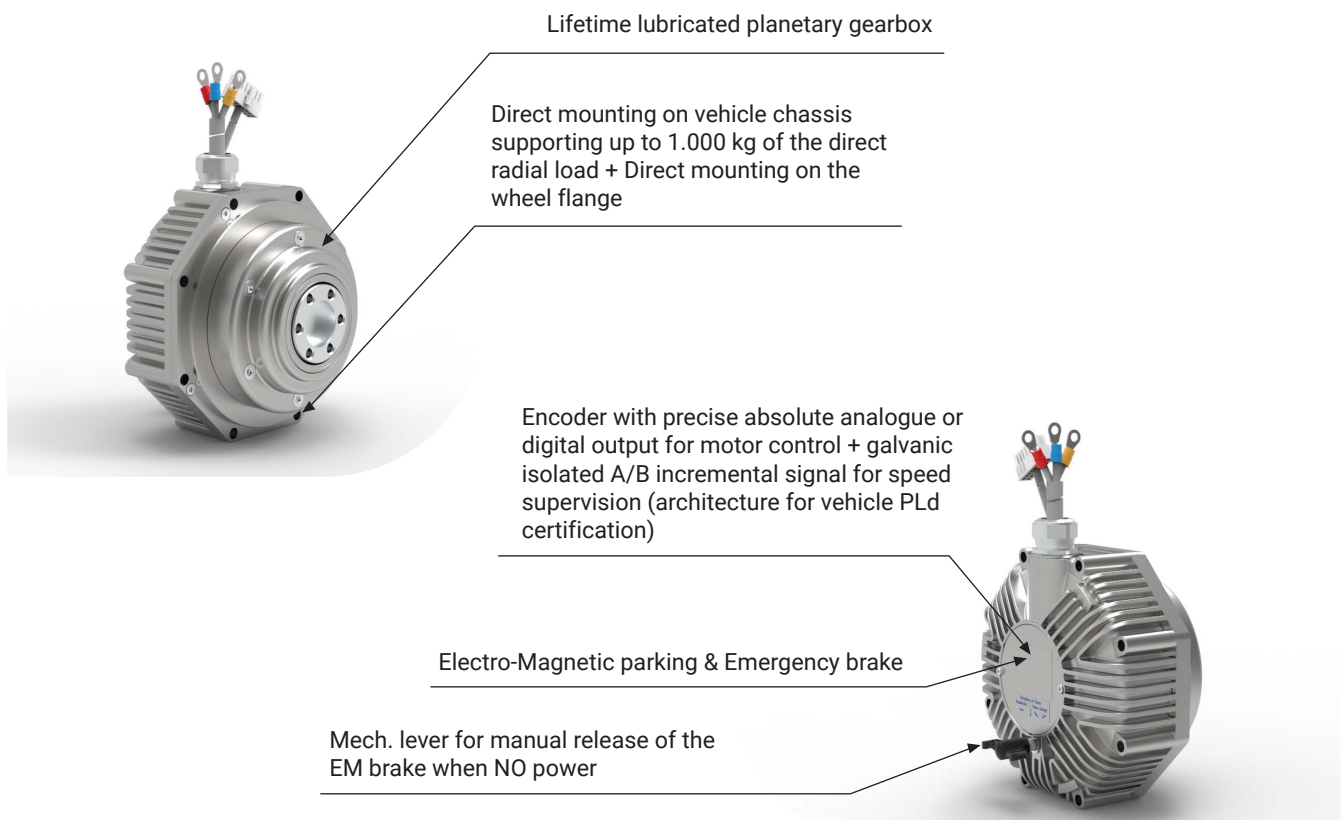
TRACTION UNITS

BL167 FAMILY



Our Traction Units are the most compact and space saving on the global AGV/AMR market. The core of the Traction Unit is always a high efficient motor by the latest brushless technology, paired with and optimized high quality planetary gearbox elegantly integrated in the wheel. Electro-magnetic parking & emergency brake with optional manual release and encoder with proper outputs for motor control and safety speed supervision are the same integrated within the unit.

DESCRIPTION



PRODUCT LINE

Motor Type	Radial load capacity	Battery voltage	Nominal torque	Max Torque	Max speed	Max Power	Gearbox	Total Axial length
BL167/25	500kg	24V	60Nm	200Nm	200rpm	2.000W	planetary; 1-stage, i=8,8	137mm
BL167/25	500kg	24V	70Nm	220Nm	150rpm	1.800W	planetary; 1-stage, i=8,8	137mm
BL167/25	500kg	24V	80Nm	240Nm	100rpm	1.600W	planetary; 1-stage, i=8,8	137mm
BL167/25	500kg	48V	60Nm	200Nm	300rpm	2.500W	planetary; 1-stage, i=8,8	137mm
BL167/25	500kg	48V	70Nm	220Nm	200rpm	2.000W	planetary; 1-stage, i=8,8	137mm
BL167/25	800kg	24V	60Nm	200Nm	200rpm	2.000W	planetary; 1-stage, i=8,8	153mm
BL167/25	800kg	24V	70Nm	220Nm	150rpm	1.800W	planetary; 1-stage, i=8,8	153mm
BL167/25	800kg	24V	80Nm	240Nm	100rpm	1.600W	planetary; 1-stage, i=8,8	153mm
BL167/25	800kg	48V	60Nm	200Nm	300rpm	2.500W	planetary; 1-stage, i=8,8	153mm
BL167/25	800kg	48V	70Nm	220Nm	200rpm	2.000W	planetary; 1-stage, i=8,8	153mm
BL167/25	1.000kg	24V	50Nm	160Nm	250rpm	2.000W	planetary; 1-stage, i=7,0	198mm
BL167/25	1.000kg	24V	60Nm	175Nm	190rpm	1.800W	planetary; 1-stage, i=7,0	198mm
BL167/25	1.000kg	24V	70Nm	190Nm	130rpm	1.600W	planetary; 1-stage, i=7,0	198mm
BL167/25	1.000kg	48V	35Nm	150Nm	500rpm	3.000W	planetary; 1-stage, i=7,0	198mm
BL167/25	1.000kg	48V	45Nm	165Nm	380rpm	2.500W	planetary; 1-stage, i=7,0	198mm
BL167/25	1.000kg	48V	55Nm	180Nm	260rpm	2.500W	planetary; 1-stage, i=7,0	198mm
BL167/25	1.000kg	24V	120Nm	380Nm	110rpm	2.000W	planetary 2-stage, i=16	198mm
BL167/25	1.000kg	24V	140Nm	400Nm	85rpm	1.800W	planetary 2-stage, i=16	198mm
BL167/25	1.000kg	24V	160Nm	420Nm	60rpm	1.600W	planetary 2-stage, i=16	198mm
BL167/25	1.000kg	48V	80Nm	340Nm	220rpm	3.000W	planetary 2-stage, i=16	198mm
BL167/25	1.000kg	48V	100Nm	380Nm	165rpm	2.500W	planetary 2-stage, i=16	198mm
BL167/25	1.000kg	48V	120Nm	410Nm	110rpm	2.000W	planetary 2-stage, i=16	198mm
BL167/25	1.000kg	24V	180Nm	500Nm	75rpm	2.000W	planetary 2-stage, i=24	198mm
BL167/25	1.000kg	24V	210Nm	500Nm	55rpm	1.800W	planetary 2-stage, i=24	198mm
BL167/25	1.000kg	24V	240Nm	500Nm	40rpm	1.600W	planetary 2-stage, i=24	198mm
BL167/25	1.000kg	48V	120Nm	500Nm	145rpm	3.000W	planetary 2-stage, i=24	198mm
BL167/25	1.000kg	48V	150Nm	500Nm	110rpm	2.500W	planetary 2-stage, i=24	198mm
BL167/25	1.000kg	48V	180Nm	500Nm	75rpm	2.000W	planetary 2-stage, i=24	198mm

- **Encoder:**

Absolute 12-14bit SSI or Sin/Cos for motor control purposes + galvanically isolated incremental ABZ for speed supervision purposes. Other variations possible.

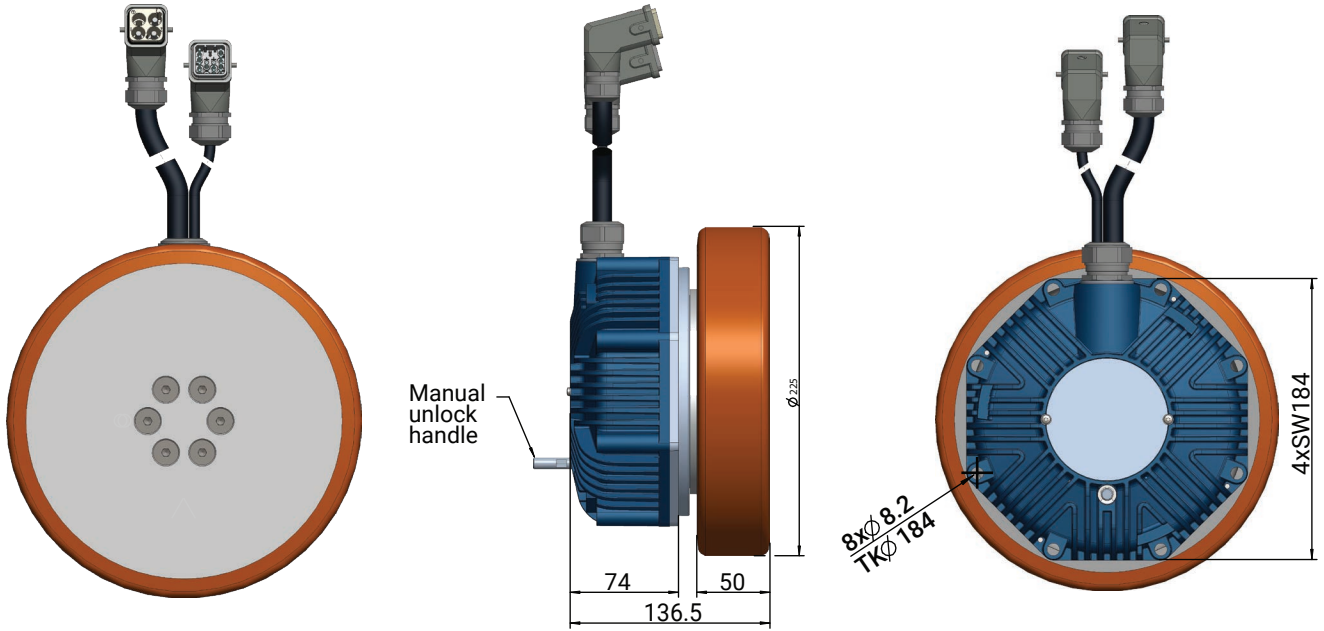
- **Wheels:**

Differential Drive: Standard 200x50mm & 225x50mm, others on demand

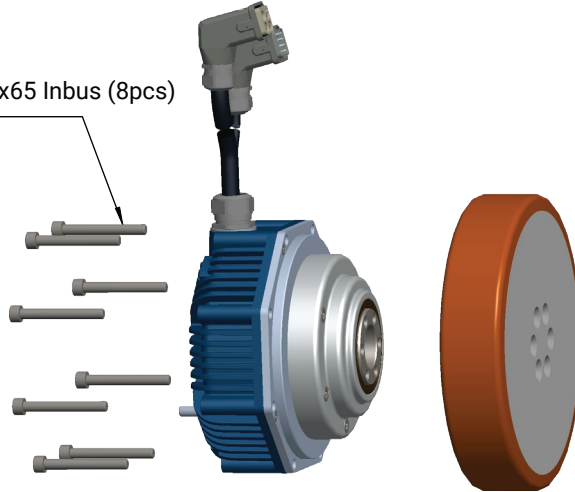
Mecanum Wheels: Standard 254x103mm, others on demand

Tyres: Application specific, on demand

DIMENSIONAL DRAWINGS BL167/25 – DIFFERENTIAL DRIVE

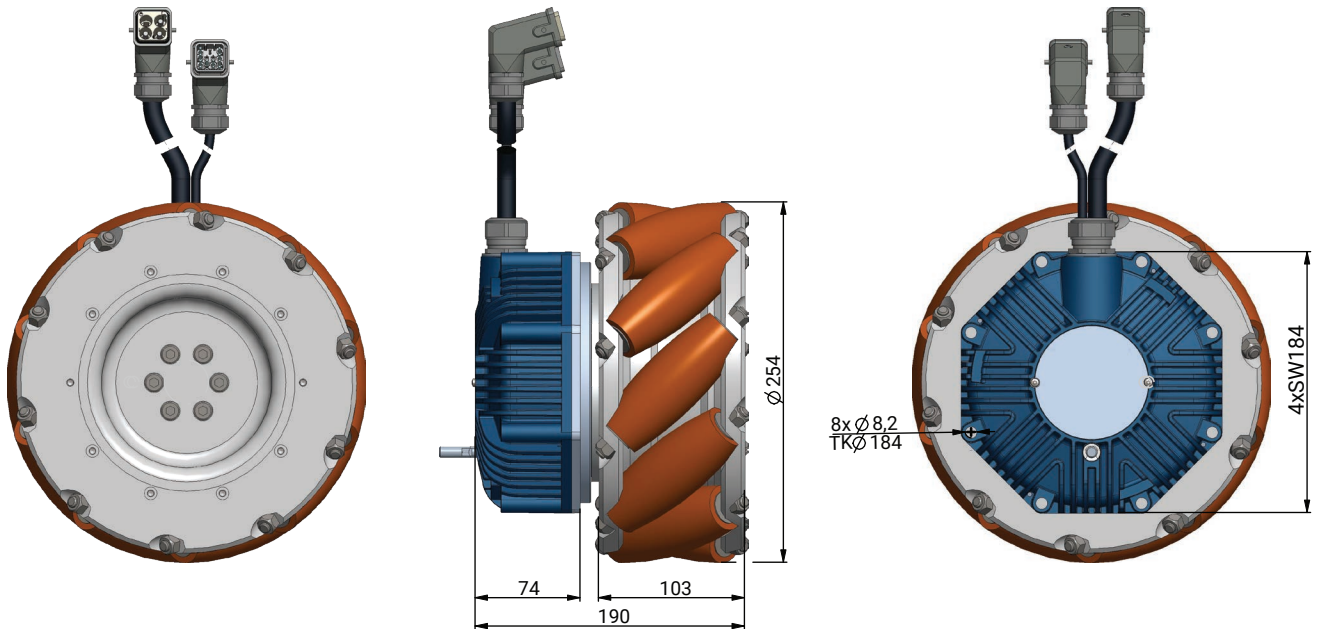


Chassis installation:
Cylinder head screw M8x65 Inbus (8pcs)

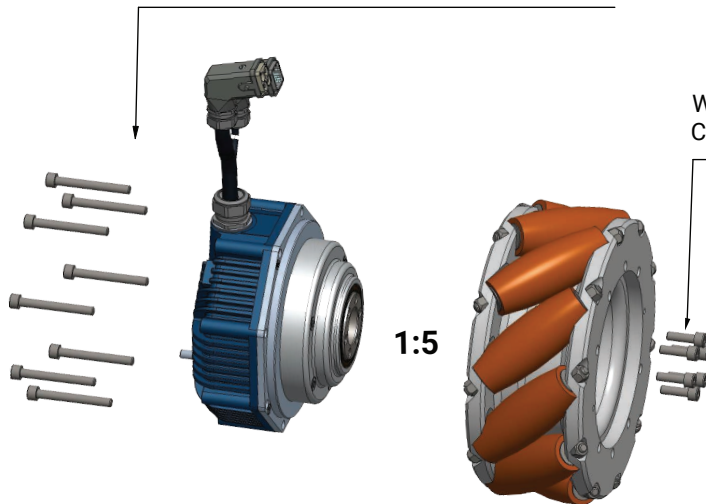


Wheel installation:
Countersunk screw M8x25 Torx (6pcs)

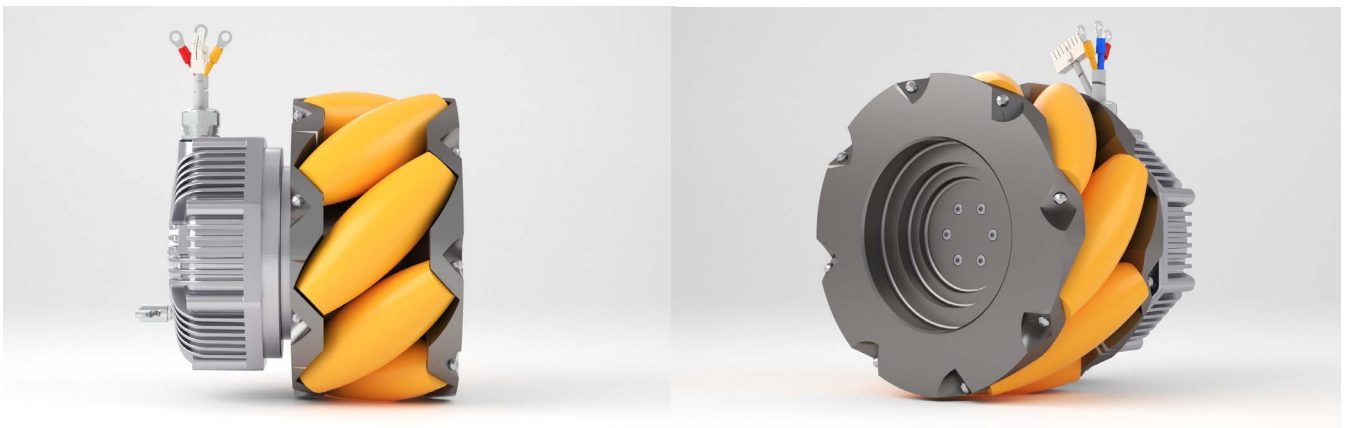


DIMENSIONAL DRAWINGS BL167/25 – MECANUM WHEEL


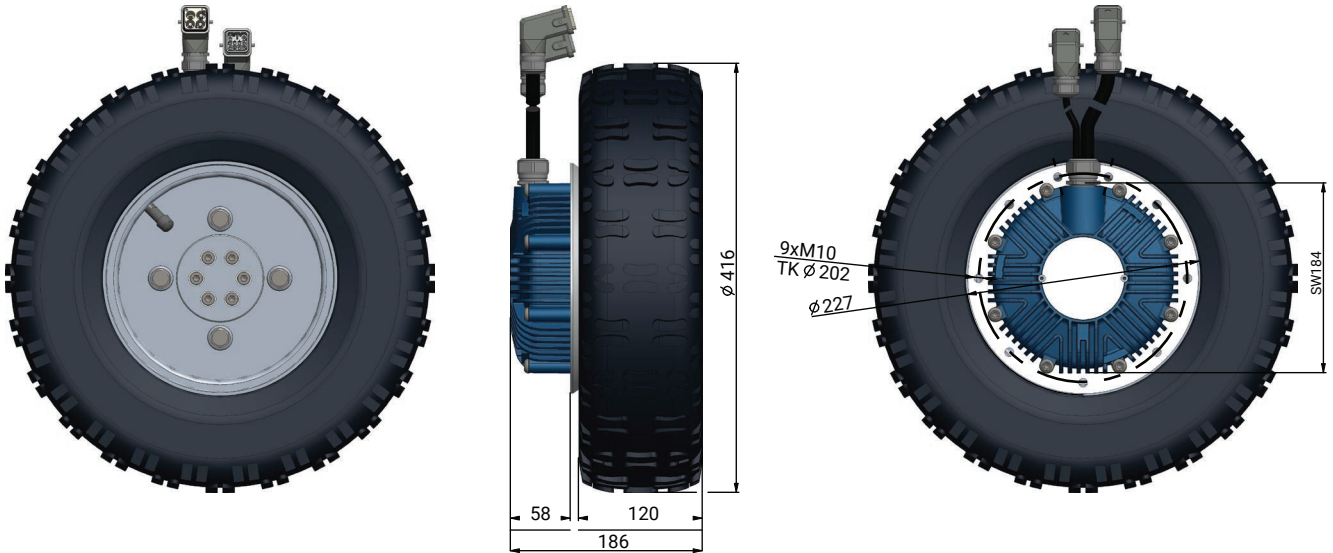
Chassis installation:
Cylinder head screw M8x65 Inbus (8pcs)



Wheel installation:
Cylinder head screw M8x25 Inbus (6pcs)



DIMENSIONAL DRAWINGS BL167/25 – OUTDOOR



Chassis installation:
M10x20 (9pcs)



Adaptation flange:
M8x30 Inbus (6pcs)



Wheel installation:
M10x16 SW17 (4pcs)

